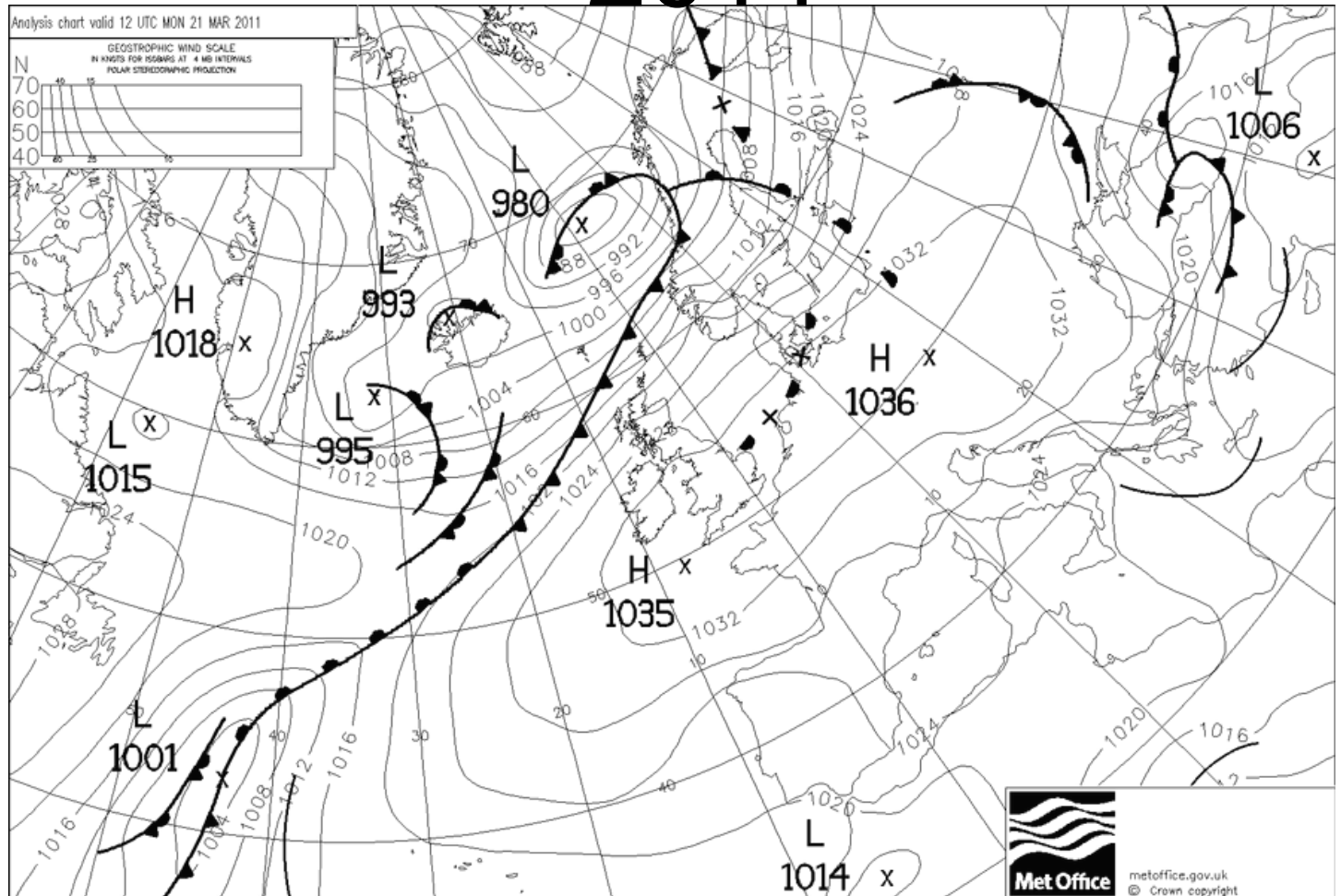
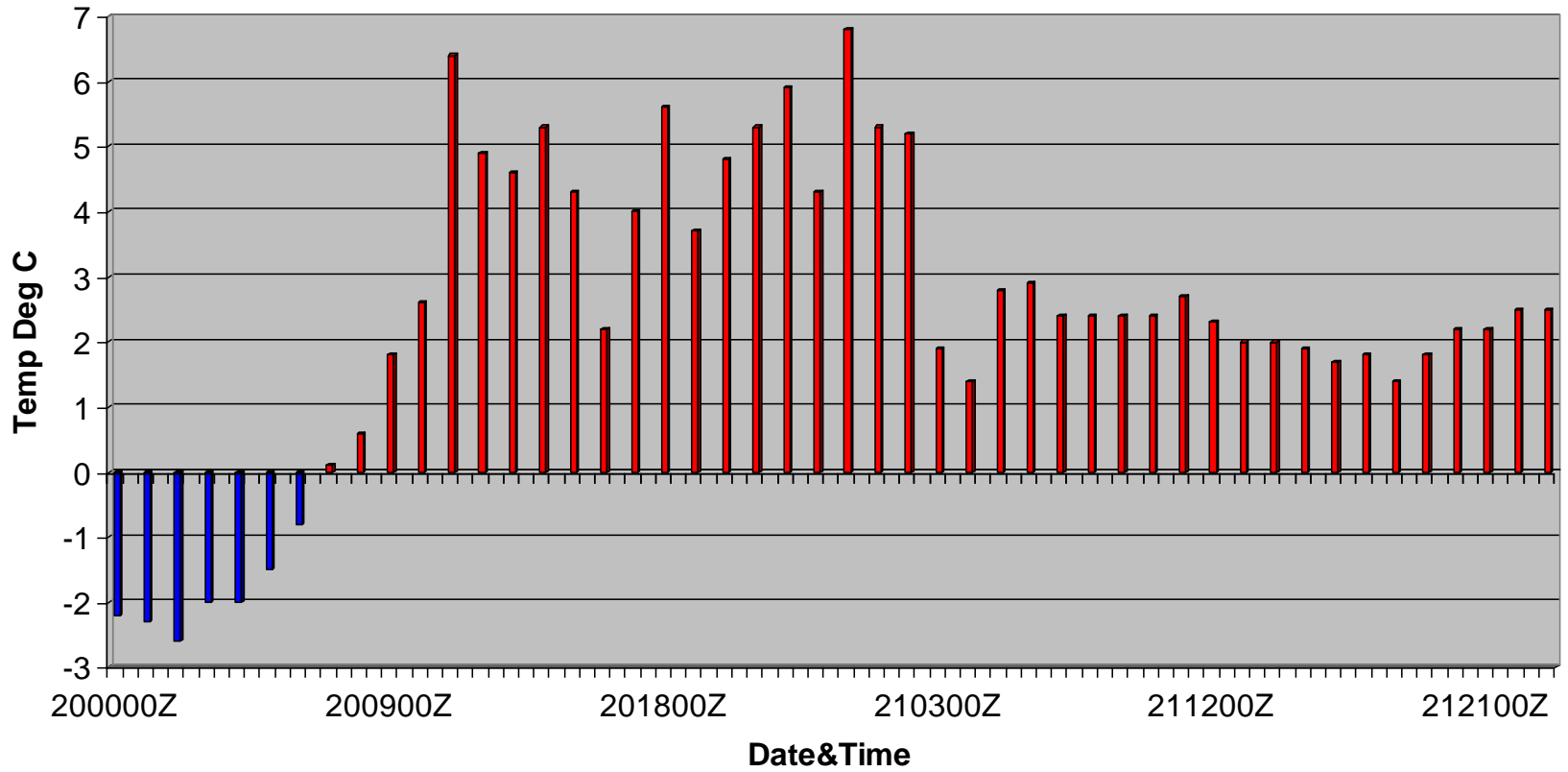


Snow Melt 20-21 March 2011



Cairngorm Temperature



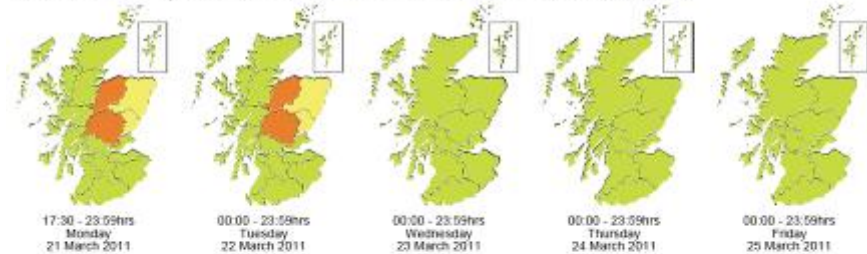


Scottish Flood Forecasting Service

Working in partnership

Flood Guidance Statement 17:30hrs 21 March 2011

Our assessment for daily flood risk in Scotland is below. This statement is valid at the time of issue.



General Overview of Flood Risk

Snow melt on high ground in the east of the country is progressing at a much greater rate than initially forecast. A combination of strong, dry winds and freezing levels above the summits is causing rising water levels in the areas highlighted in the north east of Scotland.

The Inverclyde, Nairn, Moray and Speyside region is currently experiencing the most rapid rise in river levels and a Flood Warning has been issued for the River Dulnain (Sluggan to Dulnain Bridge). Flood alerts have been issued for Tayside and will also be issued for Dundee and Angus and Aberdeenshire and Aberdeen City.

The conditions causing the rapid rise in river levels are expected to continue until at least 12:00 hours on 22/03/2011. SEPA will be monitoring the situation closely and will issue Alert updates and Warnings if required.

Risk of flooding from rivers in other areas is expected to be very low.

Coastal flood risk is expected to be very low.

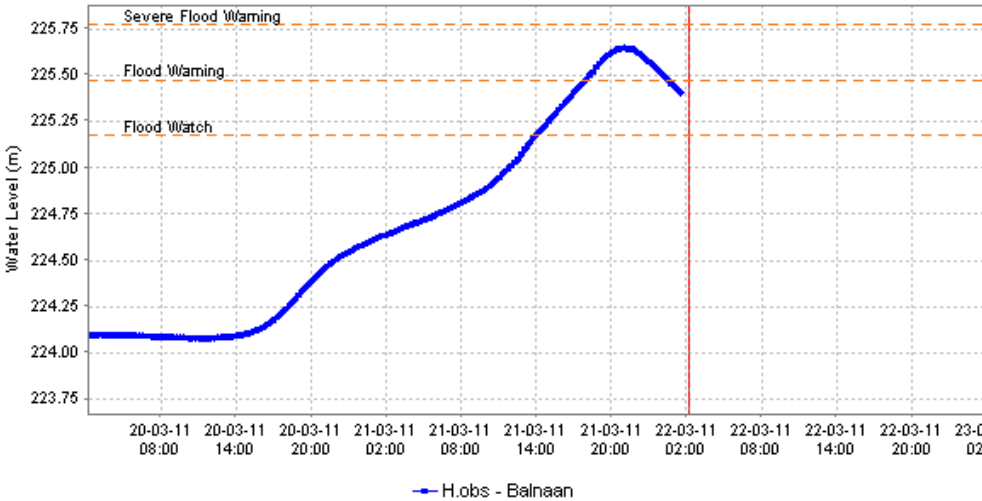
Weather Situation

High pressure will remain close to Scotland throughout this week keeping many places dry. However patchy light rain will affect the Northern Isles and West Highlands over the next 24 hours with heavier outbreaks over the Northwest Highlands tonight and into Tuesday morning, 10 to 15mm possible here. Light rain will affect Shetland on Thursday edging into the North Highland and Grampian areas on Friday but amounts of rain are expected to be small.

Warnings and Alerts in force in Scotland at 17:30hrs

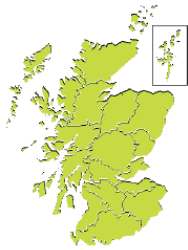
Flood ([click here](#))
0 Severe Flood Warnings / 1 Flood Warnings / 4 Flood Alerts

Severe Weather ([click here](#))
Warning - No / Alert - No

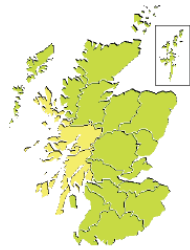


— H.obs - Balnaan

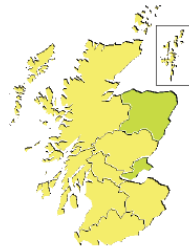
Current Event



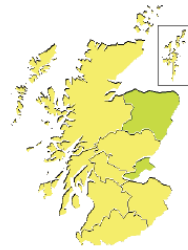
10:30 - 23:59hrs
Sunday
03 April 2011



00:00 - 23:59hrs
Monday
04 April 2011



00:00 - 23:59hrs
Tuesday
05 April 2011



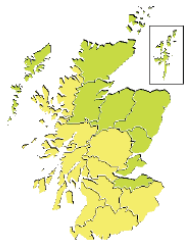
00:00 - 23:59hrs
Wednesday
06 April 2011



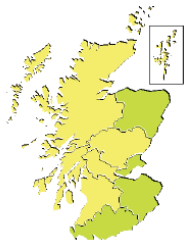
00:00 - 23:59hrs
Thursday
07 April 2011



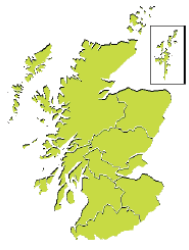
10:30 - 23:59hrs
Monday
04 April 2011



00:00 - 23:59hrs
Tuesday
05 April 2011



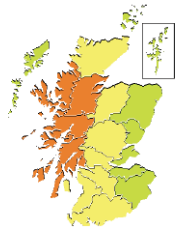
00:00 - 23:59hrs
Wednesday
06 April 2011



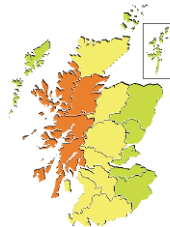
00:00 - 23:59hrs
Thursday
07 April 2011



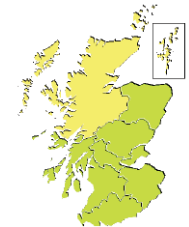
00:00 - 23:59hrs
Friday
08 April 2011



10:30 - 23:59hrs
Tuesday
05 April 2011



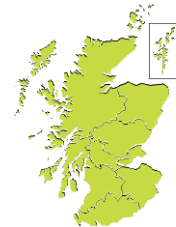
00:00 - 23:59hrs
Wednesday
06 April 2011



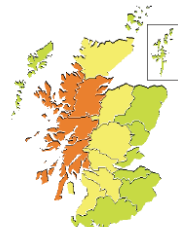
00:00 - 23:59hrs
Thursday
07 April 2011



00:00 - 23:59hrs
Friday
08 April 2011



00:00 - 23:59hrs
Saturday
09 April 2011



10:30 - 23:59hrs
Wednesday
06 April 2011



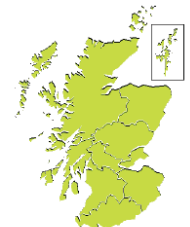
00:00 - 23:59hrs
Thursday
07 April 2011



00:00 - 23:59hrs
Friday
08 April 2011



00:00 - 23:59hrs
Saturday
09 April 2011



00:00 - 23:59hrs
Sunday
10 April 2011

You are here: [Home](#) ▶ [Weather](#) ▶ [UK](#) ▶ [Forecast](#) ▶ UK: severe weather warnings

My bookmarks + **UK: severe weather warnings**

- UK
 -
 - Forecast
 - UK forecast
 - Weather warnings**
 - Surface pressure charts
 - Mountain area forecast
 - Severe weather advice
 - Severe weather impact links
 - Latest/recent past
 - Climate
 - Europe
 - World
 - Aviation
 - Marine
 - Events

Rainfall	Pressure	Cloud	Warnings	
Weather	Wind	Temperature	UV	
Latest/recent		Forecast		
Tue	Wed	Thu	Fri	Sat

View Warning Assessment +

- No severe weather
- Be aware
- Be prepared
- Take action

Warnings overview

Tue 5 Apr

Wed 6 Apr

Thu 7 Apr

Fri 8 Apr

Sat 9 Apr

Regions

Tue	Wed	Thu	Fri	Sat
Orkney & Shetland				
Highlands & Eilean Siar				
Grampian				
Strathclyde				
Central, Tayside & Fife				
SW Scotland, Lothian Borders				
Northern Ireland				
Wales				
North West England				
North East England				
Yorkshire & Humber				
West Midlands				
East Midlands				
East of England				
South West England				
London & South East England				

Advertisement Close

The Met Office has responsibility for providing weather warnings for the UK.

See the latest [Public Flood Risk Forecast for England and](#)

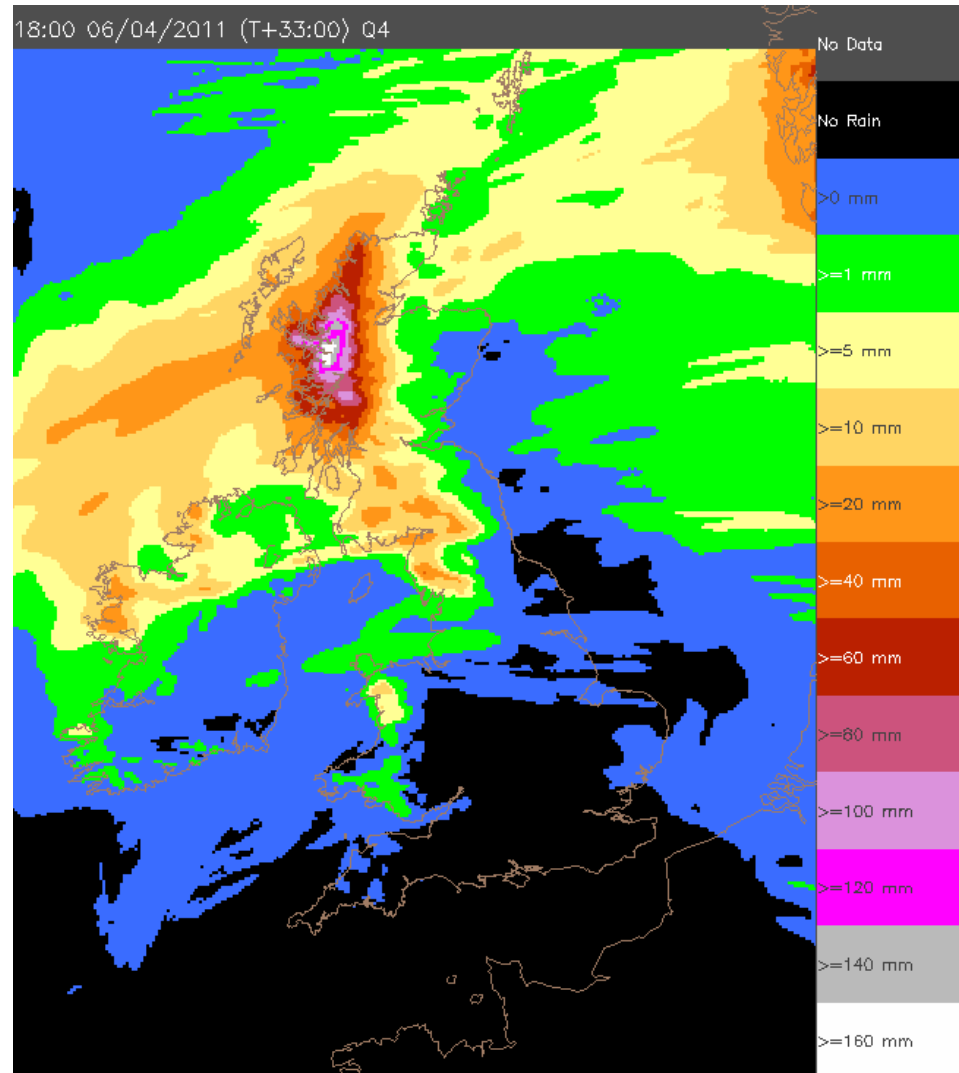
Rainfall totals of more than 120mm, from 1800 tonight for 24 hours, are expected within the shaded area. Totals of over 70mm are expected within the outer shape.



24 HR Forecast accumulations up to 1800 on Wed 6 th April 2011

Rationale Behind AMBER

Forecast for approx 24 HR of rain, often heavy with significant accumulations.

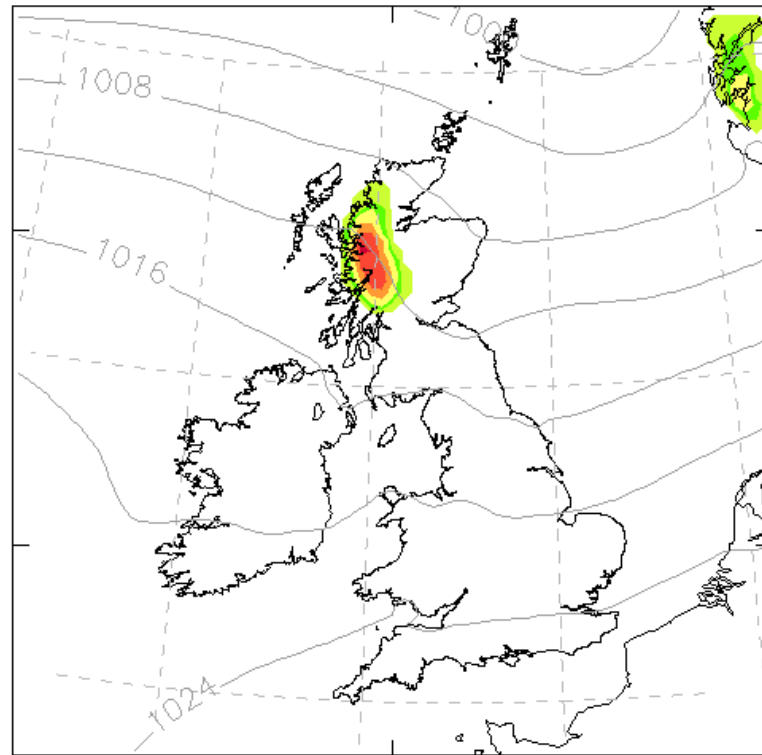


Met Office Ensemble Forecast

MOGREPS (Regional) Probability map for 24HourPrecip > 50.0mm
DT 06Z on Tue 05/04/2011 VT 18Z on Wed 06/04/2011 lead time 36h
(Ensemble Mean PMSL plotted as faint background)

Well defined area of >50MM in 24 HR up to 1800 on 6 th April.

Probability high and fits with area of high risk and deterministic forecasts hence reasonably high confidence.



No Members

0.01 0.1 0.2 0.4 0.6 0.8 0.9 0.99

All Members